

Investment
newsletter

May
2022



Grow Money Fund

ULIF00221/08/2006EGROWMONEY130

Investment Objective: To provide long term capital appreciation by investing across a diversified high quality equity portfolio.

Fund Performance(%)

	1 Month	6 Month	1 Year	2 Year	3 Year	Since Inception
Fund	-2.67	-2.87	6.16	30.71	14.86	12.56
Benchmark	-3.95	-2.91	6.13	31.08	11.70	10.96

Benchmark: Nifty 100,*Inception Date- 24 Aug 2006, <1yr ABS & >=1yr CAGR

NAV

64.6824

Modified Duration

--

Security Name

% To Fund

Security Name	% To Fund
Equities	98.65
RELIANCE NIPPON LIFE ASSET MANAGEMENT LTD	10.74
RELIANCE INDUSTRIES LTD	8.93
INFOSYS TECHNOLOGIES LTD	6.49
ICICI BANK LTD	4.96
HDFC BANK LTD	4.82
HOUSING DEVELOPMENT FINANCE CORP	4.68
TATA CONSULTANCY SERVICES LTD	3.54
ITC LTD	2.85
HINDUSTAN UNILEVER LTD	2.63
LARSEN & TOUBRO LTD	2.57
Others	46.45
Money Market/Cash	1.35
Total	100.00

Asset Class Wise Exposure

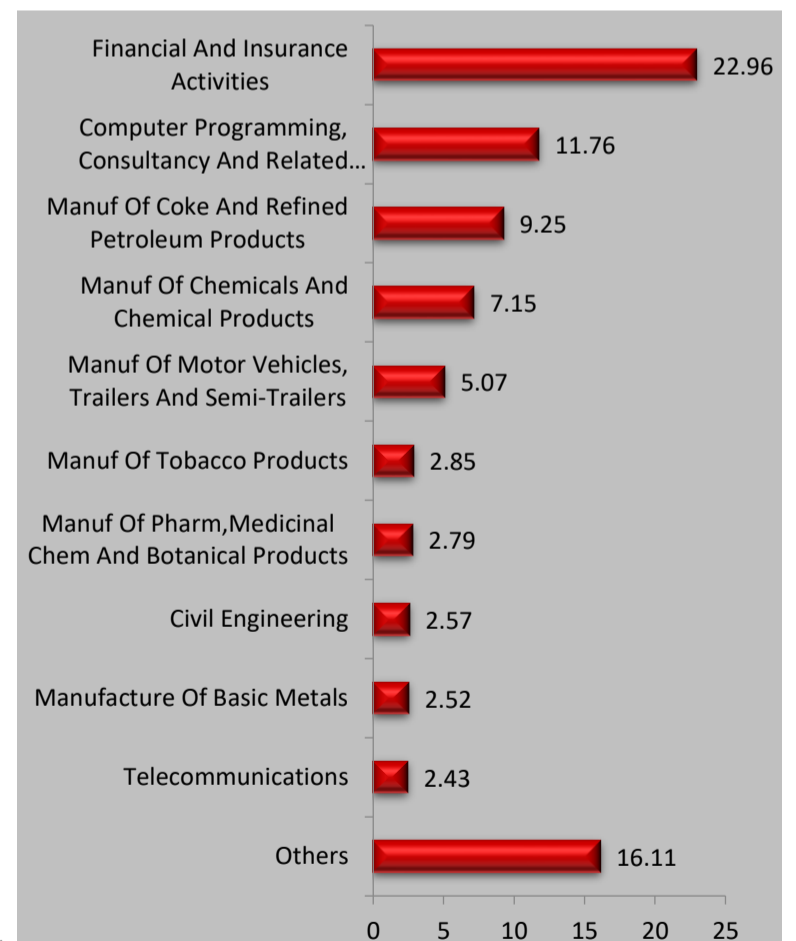
Asset Class	AUM (In Rs. Lakhs)	Exposure (%)
Equity	30190.65	98.65
Govt Securities	--	--
Corporate Bond	--	--
Money Market/Cash	412.41	1.35
Total	30603.06	100

Asset Allocation(%)

Instrument	Asset Mix (F&U)	Actual
Equity	80 - 100	98.65
Govt Securities	-	--
Corporate Bond	-	--
Money Market/Cash	0 - 40	1.35

Sector Allocation

% To Fund



Name of Fund Manager- Amit Sureka

Other Funds Managed By fund Manager: Build India Fund, Build India Pension Fund, Grow Money Pension Fund, Grow Money Pension Plus, Grow Money Plus, Growth Opportunities Plus, Growth Opportunities, Growth Opportunities Pension Plus, Growth Opportunities Pension, Save and Grow Money Pension, Save and Grow Money, Group Balance Fund.

Growth Opportunities Pension Fund

ULIF00814/12/2008EGRWTHOPRP130

Investment Objective: To provide long term capital appreciation by investing in stocks across all market capitalization ranges (Large, Mid or small)

Fund Performance(%)

	1 Month	6 Month	1 Year	2 Year	3 Year	Since Inception
Fund	-2.93	-2.00	9.29	34.23	16.24	16.64
Benchmark	-4.49	-3.61	6.75	34.35	12.91	14.68

Benchmark: Nifty 500,*Inception Date- 10 Dec 2008, <1yr ABS & >=1yr CAGR

NAV

79.5640

Modified Duration

--

Security Name

% To Fund

Security Name	% To Fund
Equities	97.52
RELIANCE INDUSTRIES LTD	8.32
RELIANCE NIPPON LIFE ASSET MANAGEMENT LTD	6.16
INFOSYS TECHNOLOGIES LTD	6.16
ICICI BANK LTD	5.25
HDFC BANK LTD	5.10
HOUSING DEVELOPMENT FINANCE CORP	3.76
ITC LTD	3.25
LARSEN & TOUBRO LTD	2.34
TATA CONSULTANCY SERVICES LTD	2.28
HINDUSTAN UNILEVER LTD	2.19
Others	52.71
Money Market/Cash	2.48
Total	100.00

Asset Class Wise Exposure

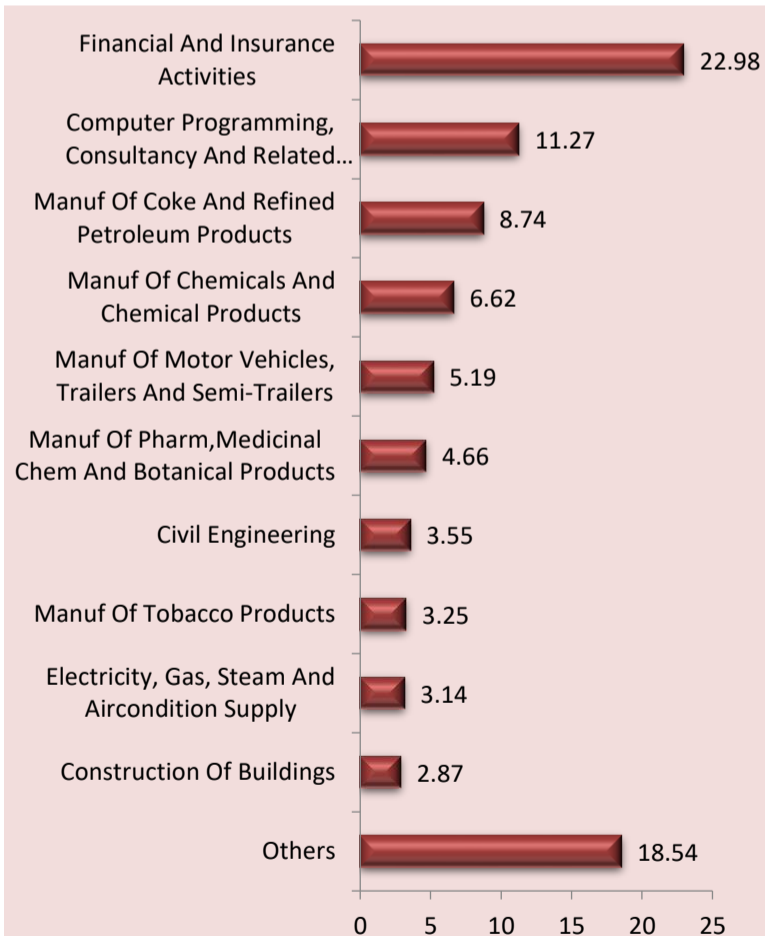
Asset Class	AUM (In Rs. Lakhs)	Exposure (%)
Equity	416.57	97.52
Govt Securities	--	--
Corporate Bond	--	--
Money Market/Cash	10.58	2.48
Total	427.15	100

Asset Allocation(%)

Instrument	Asset Mix (F&U)	Actual
Equity	80 - 100	97.52
Govt Securities	-	--
Corporate Bond	-	--
Money Market/Cash	0 - 40	2.48

Sector Allocation

% To Fund



Name of Fund Manager- Amit Sureka

Other Funds Managed By fund Manager: Build India Fund, Build India Pension Fund, Grow Money Fund, Grow Money Pension Fund, Grow Money Pension Plus, Grow Money Plus, Growth Opportunities Plus, Growth Opportunities, Growth Opportunities Pension Plus, Save and Grow Money Pension, Save and Grow Money, Group Balance Fund.

Grow Money Pension Fund

ULIF00526/12/2007EGROWMONYP130

Investment Objective: To provide long term capital appreciation by investing across a diversified high quality equity portfolio.

Fund Performance(%)

	1 Month	6 Month	1 Year	2 Year	3 Year	Since Inception
Fund	-2.68	-2.94	6.31	30.77	15.09	9.32
Benchmark	-3.95	-2.91	6.13	31.08	11.70	7.32

Benchmark: Nifty 100,*Inception Date- 03 Jan 2008, <1yr ABS & >=1yr CAGR

NAV

36.1396

Modified Duration

--

Security Name

% To Fund

Security Name	% To Fund
Equities	98.64
RELIANCE NIPPON LIFE ASSET MANAGEMENT LTD	10.72
RELIANCE INDUSTRIES LTD	9.09
INFOSYS TECHNOLOGIES LTD	6.52
ICICI BANK LTD	5.24
HOUSING DEVELOPMENT FINANCE CORP	5.15
HDFC BANK LTD	5.12
TATA CONSULTANCY SERVICES LTD	4.18
ITC LTD	2.99
LARSEN & TOUBRO LTD	2.85
HINDUSTAN UNILEVER LTD	2.59
Others	44.19
Money Market/Cash	1.36
Total	100.00

Asset Class Wise Exposure

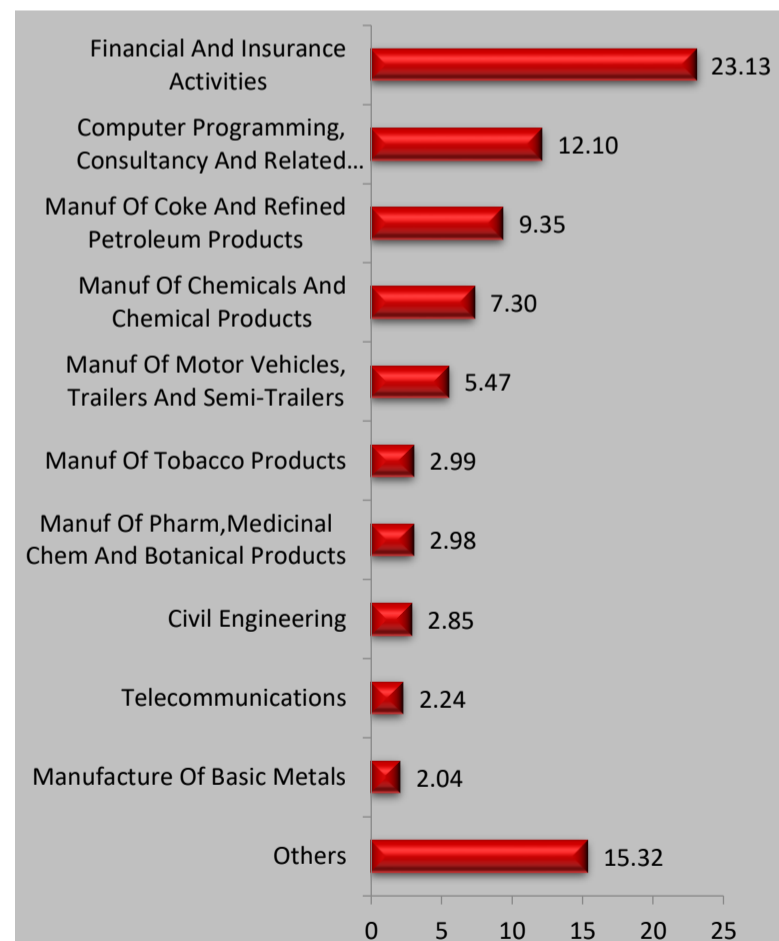
Asset Class	AUM (In Rs. Lakhs)	Exposure (%)
Equity	2555.47	98.64
Govt Securities	--	--
Corporate Bond	--	--
Money Market/Cash	35.18	1.36
Total	2590.65	100

Asset Allocation(%)

Instrument	Asset Mix (F&U)	Actual
Equity	80 - 100	98.64
Govt Securities	-	--
Corporate Bond	-	--
Money Market/Cash	0 - 40	1.36

Sector Allocation

% To Fund



Name of Fund Manager- Amit Sureka

Other Funds Managed By fund Manager: Build India Fund, Build India Pension Fund, Grow Money Fund, Grow Money Pension Plus, Grow Money Plus, Growth Opportunities Plus, Growth Opportunities, Growth Opportunities Pension Plus, Growth Opportunities Pension, Save and Grow Money Pension, Save and Grow Money, Group Balance Fund.

Grow Money Pension Plus Fund

ULIF01501/01/2010EGRMONYPLP130

Investment Objective: To provide long term capital appreciation by investing across a diversified high quality equity portfolio.

Fund Performance(%)

	1 Month	6 Month	1 Year	2 Year	3 Year	Since Inception
Fund	-2.63	-2.72	6.72	30.76	14.89	12.45
Benchmark	-3.95	-2.91	6.13	31.08	11.70	10.35

Benchmark: Nifty 100,*Inception Date- 22 Dec 2009, <1yr ABS & >=1yr CAGR

NAV

43.1018

Modified Duration

--

Security Name

% To Fund

Security Name	% To Fund
Equities	98.71
RELIANCE NIPPON LIFE ASSET MANAGEMENT LTD	10.19
RELIANCE INDUSTRIES LTD	8.98
INFOSYS TECHNOLOGIES LTD	6.52
ICICI BANK LTD	5.27
HOUSING DEVELOPMENT FINANCE CORP	5.00
HDFC BANK LTD	4.73
TATA CONSULTANCY SERVICES LTD	3.59
ITC LTD	2.89
LARSEN & TOUBRO LTD	2.83
ICICI PRUDENTIAL MUTUAL FUND LTD.	2.54
Others	46.16
Money Market/Cash	1.29
Total	100.00

Asset Class Wise Exposure

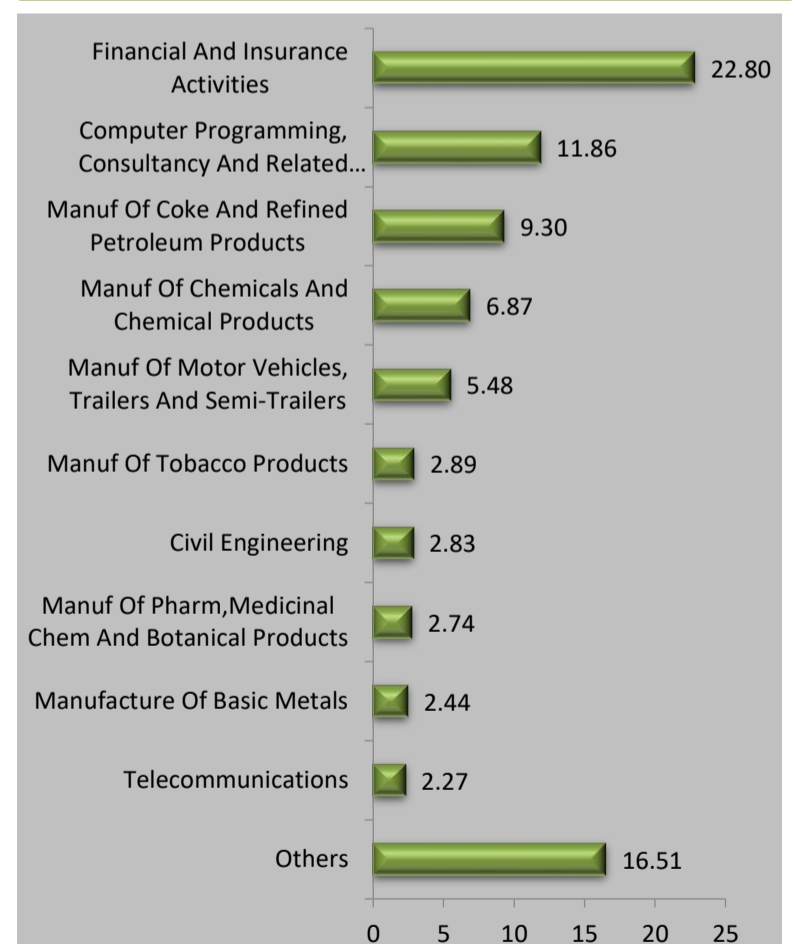
Asset Class	AUM (In Rs. Lakhs)	Exposure (%)
Equity	980.27	98.71
Govt Securities	--	--
Corporate Bond	--	--
Money Market/Cash	12.83	1.29
Total	993.10	100

Asset Allocation(%)

Instrument	Asset Mix (F&U)	Actual
Equity	80 - 100	98.71
Govt Securities	-	--
Corporate Bond	-	--
Money Market/Cash	0 - 40	1.29

Sector Allocation

% To Fund



Name of Fund Manager- Amit Sureka

Other Funds Managed By fund Manager: Build India Fund, Build India Pension Fund, Grow Money Fund, Grow Money Pension Fund, Grow Money Plus, Growth Opportunities Plus, Growth Opportunities, Growth Opportunities Pension Plus, Growth Opportunities Pension, Save and Grow Money Pension, Save and Grow Money, Group Balance Fund.

Growth Opportunities Fund

ULIF00708/12/2008EGROWTHOPR130

Investment Objective: To provide long term capital appreciation by investing in stocks across all market capitalization ranges (Large, Mid or small).

Fund Performance(%)

	1 Month	6 Month	1 Year	2 Year	3 Year	Since Inception
Fund	-2.81	-2.13	9.65	34.96	16.82	17.07
Benchmark	-4.49	-3.61	6.75	34.35	12.91	14.73

Benchmark: Nifty 500,*Inception Date- 10 Dec 2008, <1yr ABS & >=1yr CAGR

NAV

83.6971

Modified Duration

--

Security Name

% To Fund

Security Name	% To Fund
Equities	97.25
RELIANCE INDUSTRIES LTD	7.39
RELIANCE NIPPON LIFE ASSET MANAGEMENT LTD	6.17
INFOSYS TECHNOLOGIES LTD	5.74
ICICI BANK LTD	4.88
HDFC BANK LTD	4.64
HOUSING DEVELOPMENT FINANCE CORP	3.68
ITC LTD	2.66
TATA CONSULTANCY SERVICES LTD	2.50
LARSEN & TOUBRO LTD	2.27
BHARTI AIRTEL LTD	1.92
Others	55.41
Money Market/Cash	2.75
Total	100.00

Asset Class Wise Exposure

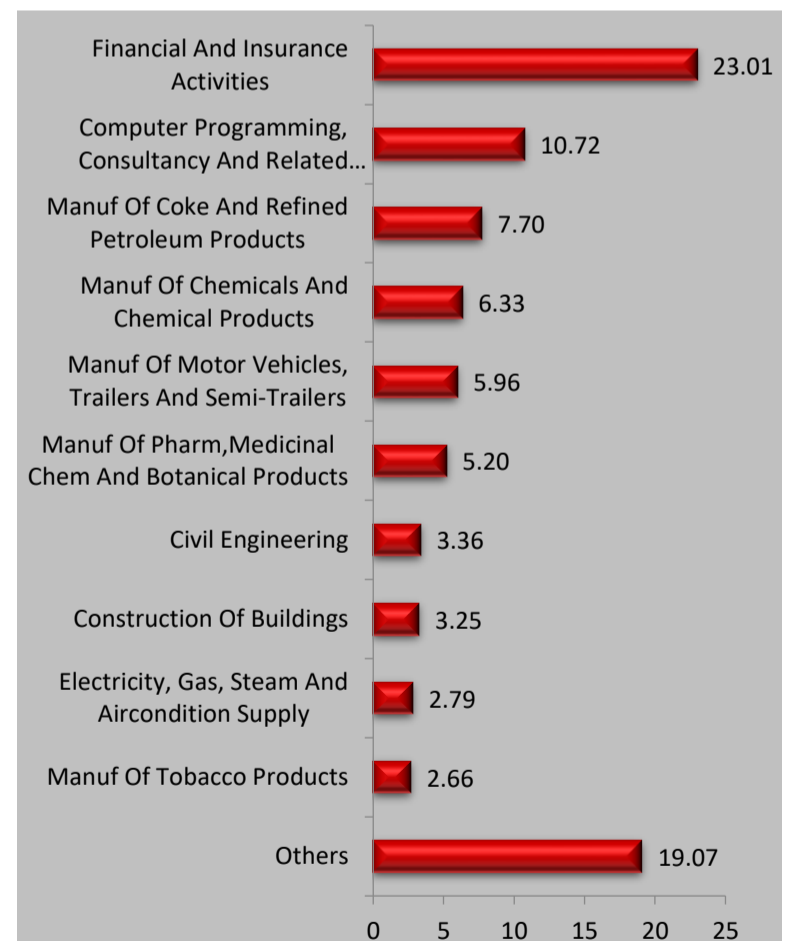
Asset Class	AUM (In Rs. Lakhs)	Exposure (%)
Equity	3969.22	97.25
Govt Securities	--	--
Corporate Bond	--	--
Money Market/Cash	112.09	2.75
Total	4081.31	100

Asset Allocation(%)

Instrument	Asset Mix (F&U)	Actual
Equity	80 - 100	97.25
Govt Securities	-	--
Corporate Bond	-	--
Money Market/Cash	0 - 40	2.75

Sector Allocation

% To Fund



Name of Fund Manager- Amit Sureka

Other Funds Managed By fund Manager: Build India Fund, Build India Pension Fund, Grow Money Fund, Grow Money Pension Fund, Grow Money Pension Plus, Grow Money Plus, Growth Opportunities Plus, Growth Opportunities Pension Plus, Growth Opportunities Pension, Save and Grow Money Pension, Save and Grow Money, Group Balance Fund.

Growth Opportunities Plus Fund

ULIF01614/12/2009EGRWTHOPPL130

Investment Objective: To provide long term capital appreciation by investing in stocks across all market capitalization ranges (Large, Mid or small).

Fund Performance(%)

	1 Month	6 Month	1 Year	2 Year	3 Year	Since Inception
Fund	-2.78	-2.30	9.02	34.13	15.80	12.83
Benchmark	-4.49	-3.61	6.75	34.35	12.91	10.02

Benchmark: Nifty 500,*Inception Date- 29 Dec 2009, <1yr ABS & >=1yr CAGR

NAV

44.8208

Modified Duration

--

Security Name

% To Fund

Security Name	% To Fund
Equities	91.07
RELIANCE NIPPON LIFE ASSET MANAGEMENT LTD	7.93
RELIANCE INDUSTRIES LTD	7.43
INFOSYS TECHNOLOGIES LTD	4.86
ICICI BANK LTD	4.07
HDFC BANK LTD	3.92
HOUSING DEVELOPMENT FINANCE CORP	3.58
TATA CONSULTANCY SERVICES LTD	2.39
ITC LTD	2.37
LARSEN & TOUBRO LTD	2.17
BHARTI AIRTEL LTD	2.10
Others	50.24
Money Market/Cash	8.93
Total	100.00

Asset Class Wise Exposure

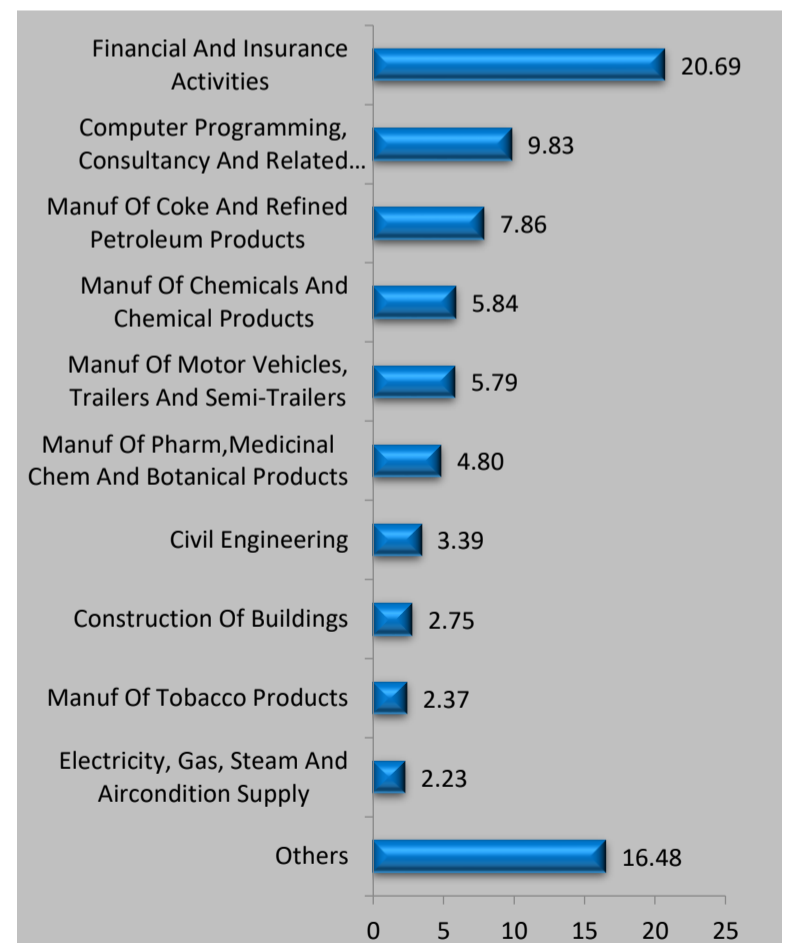
Asset Class	AUM (In Rs. Lakhs)	Exposure (%)
Equity	53097.34	91.07
Govt Securities	--	--
Corporate Bond	--	--
Money Market/Cash	5207.59	8.93
Total	58304.94	100

Asset Allocation(%)

Instrument	Asset Mix (F&U)	Actual
Equity	80 - 100	91.07
Govt Securities	-	--
Corporate Bond	-	--
Money Market/Cash	0 - 40	8.93

Sector Allocation

% To Fund



Name of Fund Manager- Amit Sureka

Other Funds Managed By fund Manager: Build India Fund, Build India Pension Fund, Grow Money Fund, Grow Money Pension Fund, Grow Money Pension Plus, Grow Money Plus, Growth Opportunities Plus, Growth Opportunities, Growth Opportunities Pension Plus, Growth Opportunities Pension, Save and Grow Money Pension, Save and Grow Money, Group Balance Fund.

Grow Money Plus Fund

ULIF01214/12/2009EGROMONYPL130

Investment Objective: To provide long term capital appreciation by investing across a diversified high quality equity portfolio.

Fund Performance(%)

	1 Month	6 Month	1 Year	2 Year	3 Year	Since Inception
Fund	-2.64	-2.89	6.88	30.75	15.14	12.55
Benchmark	-3.95	-2.91	6.13	31.08	11.70	10.15

Benchmark: Nifty 100,*Inception Date- 14 Dec 2009, <1yr ABS & >=1yr CAGR

NAV

43.6508

Modified Duration

--

Security Name

% To Fund

Security Name	% To Fund
Equities	94.12
RELIANCE NIPPON LIFE ASSET MANAGEMENT LTD	10.92
RELIANCE INDUSTRIES LTD	8.88
INFOSYS TECHNOLOGIES LTD	5.69
HOUSING DEVELOPMENT FINANCE CORP	4.82
ICICI BANK LTD	4.44
HDFC BANK LTD	4.18
TATA CONSULTANCY SERVICES LTD	3.06
LARSEN & TOUBRO LTD	2.69
ICICI PRUDENTIAL MUTUAL FUND LTD.	2.53
HINDUSTAN UNILEVER LTD	2.43
Others	44.46
Money Market/Cash	5.88
Total	100.00

Asset Class Wise Exposure

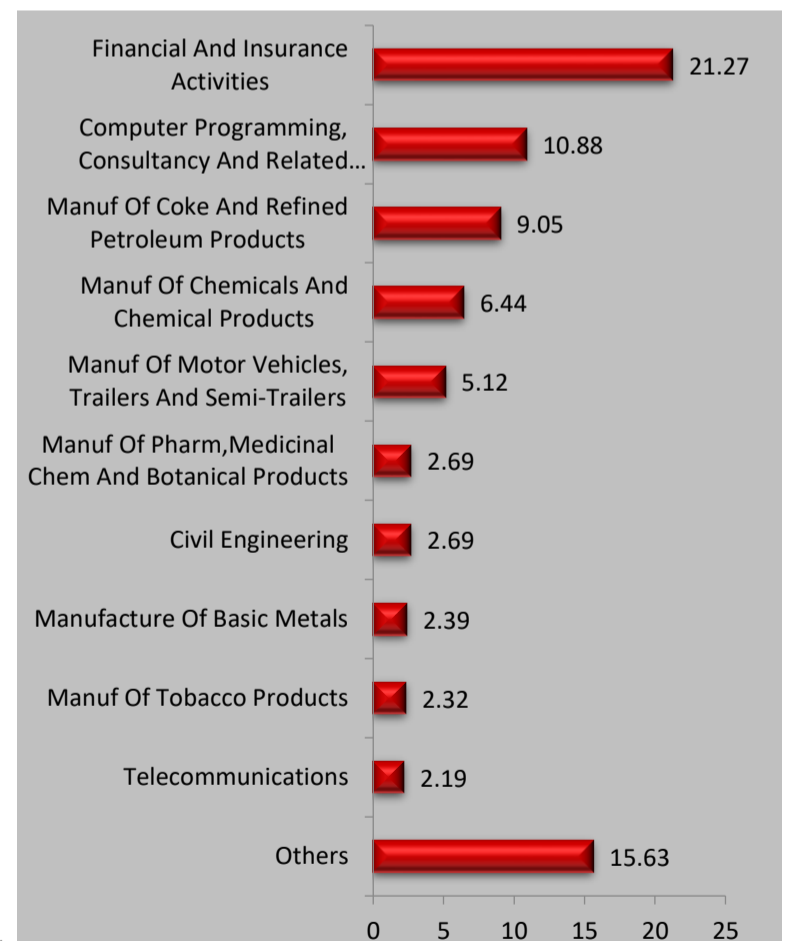
Asset Class	AUM (In Rs. Lakhs)	Exposure (%)
Equity	25988.70	94.12
Govt Securities	--	--
Corporate Bond	--	--
Money Market/Cash	1624.76	5.88
Total	27613.45	100

Asset Allocation(%)

Instrument	Asset Mix (F&U)	Actual
Equity	80 - 100	94.12
Govt Securities	-	--
Corporate Bond	-	--
Money Market/Cash	0 - 40	5.88

Sector Allocation

% To Fund



Name of Fund Manager- Amit Sureka

Other Funds Managed By fund Manager: Build India Fund, Build India Pension Fund, Grow Money Fund, Grow Money Pension Fund, Grow Money Pension Plus, Growth Opportunities Plus, Growth Opportunities, Growth Opportunities Pension Plus, Growth Opportunities Pension, Save and Grow Money Pension, Save and Grow Money, Group Balance Fund.

Growth Opportunities Pension Plus Fund

ULIF01801/01/2010EGRWTHOPLP130

Investment Objective: To provide long term capital appreciation by investing in stocks across all market capitalization ranges (Large, Mid or small).

Fund Performance(%)

	1 Month	6 Month	1 Year	2 Year	3 Year	Since Inception
Fund	-2.90	-1.51	10.16	35.59	17.21	13.63
Benchmark	-4.49	-3.61	6.75	34.35	12.91	10.15

Benchmark: Nifty 500,*Inception Date- 25 Jan 2010, <1yr ABS & >=1yr CAGR

NAV

48.4990

Modified Duration

--

Security Name

% To Fund

Security Name	% To Fund
Equities	97.92
RELIANCE INDUSTRIES LTD	8.14
RELIANCE NIPPON LIFE ASSET MANAGEMENT LTD	6.84
INFOSYS TECHNOLOGIES LTD	5.93
ICICI BANK LTD	4.66
HDFC BANK LTD	3.67
HOUSING DEVELOPMENT FINANCE CORP	3.54
ITC LTD	3.37
TATA CONSULTANCY SERVICES LTD	3.21
LARSEN & TOUBRO LTD	2.55
SUN PHARMACEUTICALS INDUS LTD	2.04
Others	53.96
Money Market/Cash	2.08
Total	100.00

Asset Class Wise Exposure

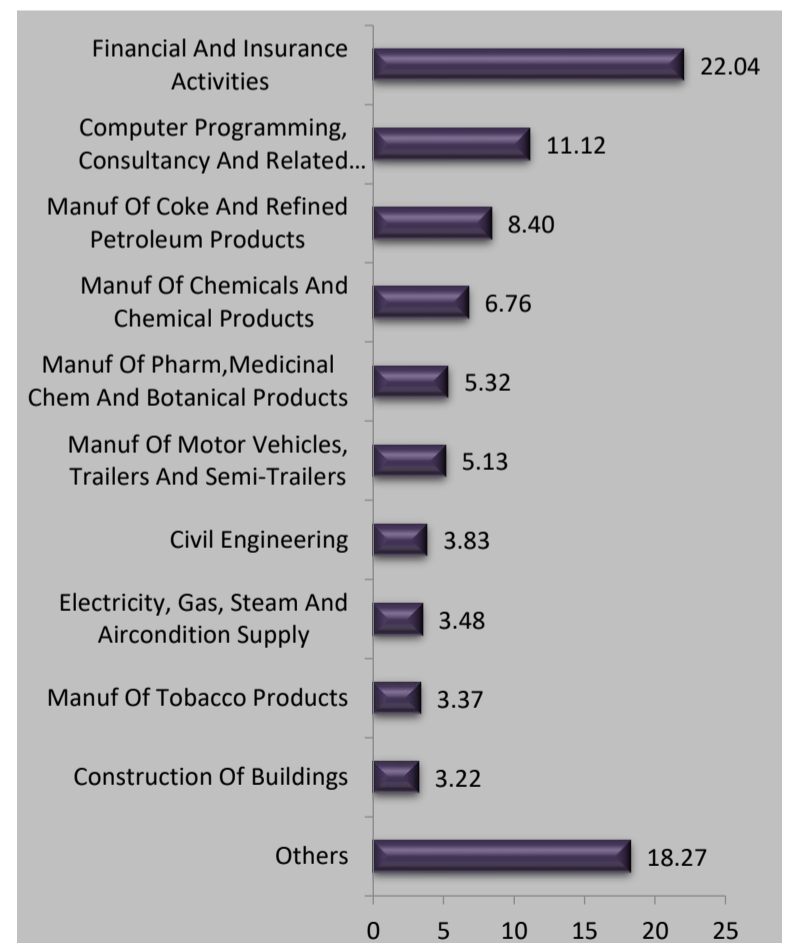
Asset Class	AUM (In Rs. Lakhs)	Exposure (%)
Equity	1837.53	97.92
Govt Securities	--	--
Corporate Bond	--	--
Money Market/Cash	39.10	2.08
Total	1876.63	100

Asset Allocation(%)

Instrument	Asset Mix (F&U)	Actual
Equity	80 - 100	97.92
Govt Securities	-	--
Corporate Bond	-	--
Money Market/Cash	0 - 40	2.08

Sector Allocation

% To Fund



Name of Fund Manager- Amit Sureka

Other Funds Managed By fund Manager: Build India Fund, Build India Pension Fund, Grow Money Fund, Grow Money Pension Fund, Grow Money Pension Plus, Grow Money Plus, Growth Opportunities Plus, Growth Opportunities, Growth Opportunities Pension, Save and Grow Money Pension, Save and Grow Money, Group Balance Fund.

Build India Pension Fund

ULIF01704/01/2010EBUILDINDP130

Investment Objective: To provide long term capital appreciation, through exposure to equity investments in Infrastructure and allied sectors, and by diversifying investments across various sub-sectors of the infrastructure sector.

Fund Performance(%)

	1 Month	6 Month	1 Year	2 Year	3 Year	Since Inception
Fund	-2.90	-3.10	6.52	29.88	13.13	10.77
Benchmark	-3.95	-2.91	6.13	31.08	11.70	9.90

Benchmark: Nifty 100,*Inception Date- 18 Jan 2010, <1yr ABS & >=1yr CAGR

NAV

35.4421

Modified Duration

--

Security Name

% To Fund

Security Name	% To Fund
Equities	98.57
RELIANCE NIPPON LIFE ASSET MANAGEMENT LTD	10.61
RELIANCE INDUSTRIES LTD	9.07
INFOSYS TECHNOLOGIES LTD	7.00
HDFC BANK LTD	5.87
ICICI BANK LTD	5.13
HOUSING DEVELOPMENT FINANCE CORP	4.41
HINDUSTAN UNILEVER LTD	2.75
LARSEN & TOUBRO LTD	2.72
ICICI PRUDENTIAL MUTUAL FUND LTD.	2.63
BHARTI AIRTEL LTD	2.41
Others	45.96
Money Market/Cash	1.43
Total	100.00

Asset Class Wise Exposure

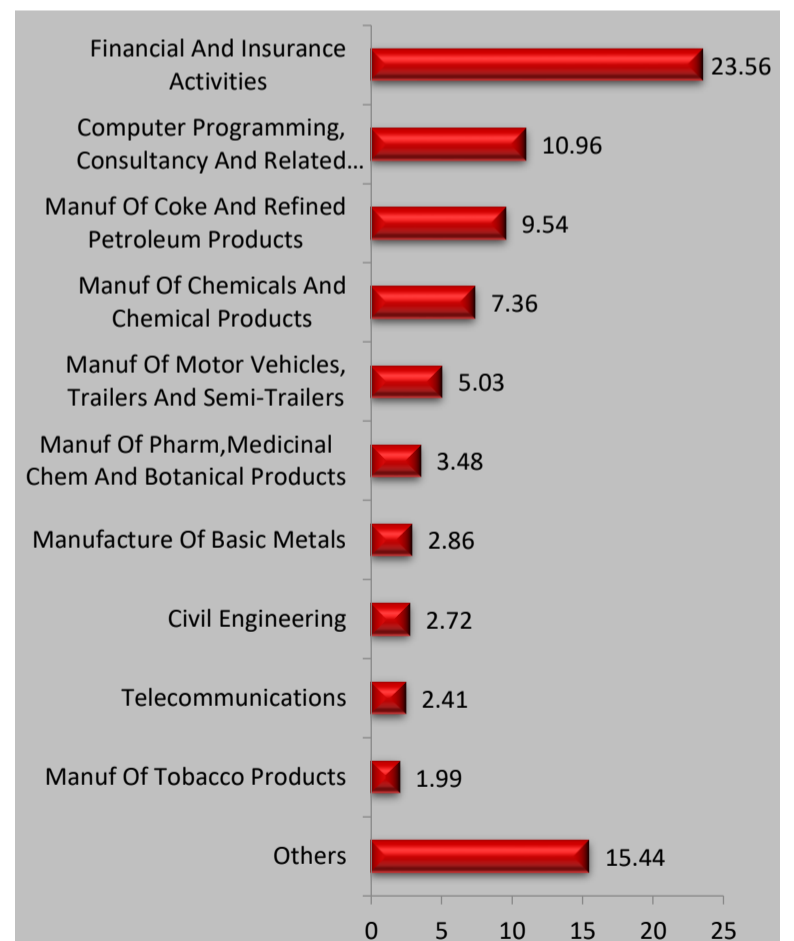
Asset Class	AUM (In Rs. Lakhs)	Exposure (%)
Equity	478.16	98.57
Govt Securities	--	--
Corporate Bond	--	--
Money Market/Cash	6.92	1.43
Total	485.08	100

Asset Allocation(%)

Instrument	Asset Mix (F&U)	Actual
Equity	80 - 100	98.57
Govt Securities	-	--
Corporate Bond	0 - 20	--
Money Market/Cash	0 - 20	1.43

Sector Allocation

% To Fund



Name of Fund Manager- Amit Sureka

Other Funds Managed By fund Manager: Build India Fund, Grow Money Fund, Grow Money Pension Fund, Grow Money Pension Plus, Grow Money Plus, Growth Opportunities Plus, Growth Opportunities, Growth Opportunities Pension Plus, Growth Opportunities Pension, Save and Grow Money Pension, Save and Grow Money, Group Balance Fund.

Build India Fund

ULIF01909/02/2010EBUILDINDA130

Investment Objective: To provide long term capital appreciation, through exposure to equity investments in Infrastructure and allied sectors, and by diversifying investments across various sub-sectors of the infrastructure sector.

Fund Performance(%)

	1 Month	6 Month	1 Year	2 Year	3 Year	Since Inception
Fund	-2.89	-2.77	8.04	30.56	13.49	11.79
Benchmark	-3.95	-2.91	6.13	31.08	11.70	10.78

Benchmark: Nifty 100,*Inception Date- 15 Feb 2010, <1yr ABS & >=1yr CAGR

NAV

39.3555

Modified Duration

--

Security Name

% To Fund

Security Name	% To Fund
Equities	99.04
RELIANCE NIPPON LIFE ASSET MANAGEMENT LTD	10.73
RELIANCE INDUSTRIES LTD	8.71
INFOSYS TECHNOLOGIES LTD	6.16
HDFC BANK LTD	5.28
ICICI BANK LTD	4.05
HOUSING DEVELOPMENT FINANCE CORP	3.46
TATA CONSULTANCY SERVICES LTD	3.12
ITC LTD	3.02
ICICI PRUDENTIAL MUTUAL FUND LTD.	2.79
LARSEN & TOUBRO LTD	2.71
Others	49.02
Money Market/Cash	0.96
Total	100.00

Asset Class Wise Exposure

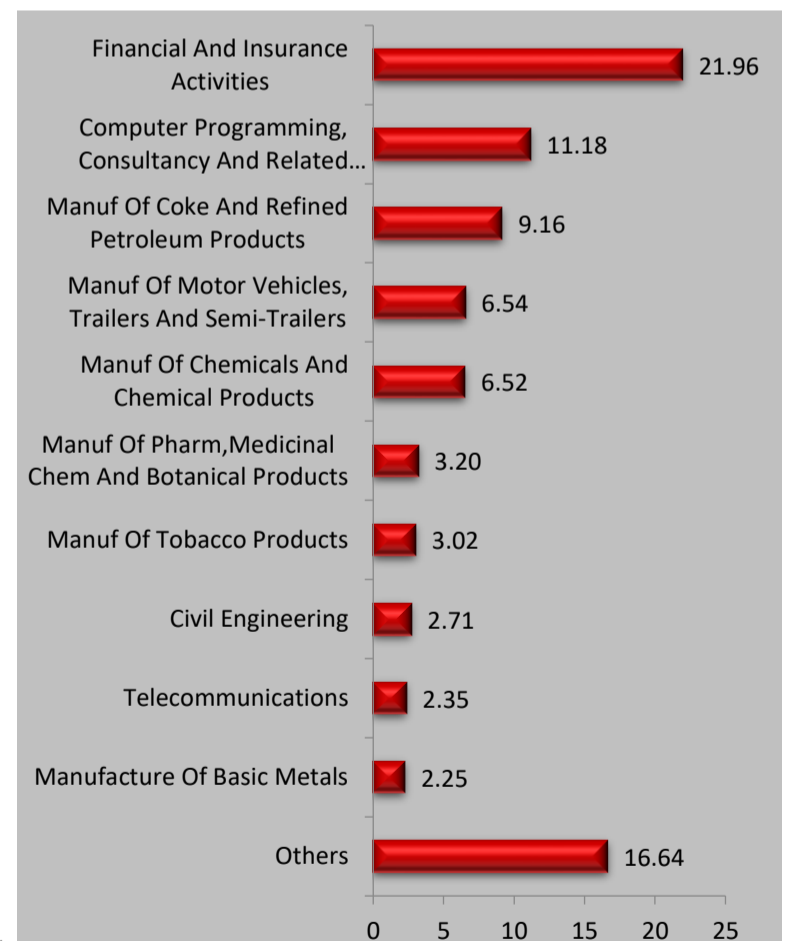
Asset Class	AUM (In Rs. Lakhs)	Exposure (%)
Equity	2873.57	99.04
Govt Securities	--	--
Corporate Bond	--	--
Money Market/Cash	27.98	0.96
Total	2901.54	100

Asset Allocation(%)

Instrument	Asset Mix (F&U)	Actual
Equity	80 - 100	99.04
Govt Securities	-	--
Corporate Bond	0 - 20	--
Money Market/Cash	0 - 20	0.96

Sector Allocation

% To Fund



Name of Fund Manager- Amit Sureka

Other Funds Managed By fund Manager: Build India Pension Fund, Grow Money Fund, Grow Money Pension Fund, Grow Money Pension Plus, Grow Money Plus, Growth Opportunities Plus, Growth Opportunities, Growth Opportunities Pension Plus, Growth Opportunities Pension, Save and Grow Money Pension, Save and Grow Money, Group Balance Fund.

Save and Grow Money Fund

ULIF00121/08/2006BSAENGROW130

Investment Objective: To provide steady accumulation of income in medium to long term by investing in high quality debt papers and government securities and a limited opportunity of capital appreciation. This would be more of a defensively managed fund.

Fund Performance(%)

	1 Month	6 Month	1 Year	2 Year	3 Year	SI
Fund	-1.42	-2.04	4.60	13.94	8.88	9.72

Benchmark -2.52 -2.43 3.11 15.85 8.85 8.99

Benchmark: Nifty 100=45%, Crisil Composite Bond Fund Index=55%,*Inception Date- 21 Aug 2006, <1yr ABS & >=1yr CAGR

NAV

43.2426

Modified Duration

4.01

Security Name % To Fund

Equities 46.08

RELIANCE INDUSTRIES LTD	4.41
INFOSYS TECHNOLOGIES LTD	3.84
HDFC BANK LTD	3.60
ICICI BANK LTD	3.23
HOUSING DEVELOPMENT FINANCE CORP	2.57
TATA CONSULTANCY SERVICES LTD	1.92
STATE BANK OF INDIA LTD	1.65
HINDUSTAN UNILEVER LTD	1.52
LARSEN & TOUBRO LTD	1.46
ITC LTD	1.40
Others	20.47

Government Securities 27.85

5.74% GOI 15/11/2026	6.02
7.17% GOI 08/01/2028	4.64
7.26% GOI 14/01/2029	4.46
6.54% GOI 17/01/2032	3.26
7.27% GOI 08/04/2026	2.94
5.63% GOI 12/04/2026	2.15
7.57% GOI 17/06/2033	1.70
5.22% GOI 15/06/2025	0.67
364 D TB 09/06/2022	0.64
7.19% GOI 15/09/2060	0.50
Others	0.88

Corporate Bonds 18.80

7.27% NABARD 14/02/2030	6.92
7.59% PNB HOUSING FINANCE LTD 27/07/2022	2.69
6.83% HOUSING DEVELOPMENT FINANCE CORP 08/01/2031	2.41
9.55% HINDALCO INDUSTRIES LTD 27/06/2022	2.27
9.6% EXIM Bank LTD 07/02/2024	1.77
9.6% HDB FINANCIAL SERVICES LTD 22/03/2023	1.16
7.6% AXIS BANK LTD 20/10/2023	1.14
9.3% INDIA INFRADEBT LTD 05/01/2024	0.29
8.01% REC LTD 24/03/2028	0.15

Money Market/Cash 7.27

Total 100.00

Asset Class (% To Fund)

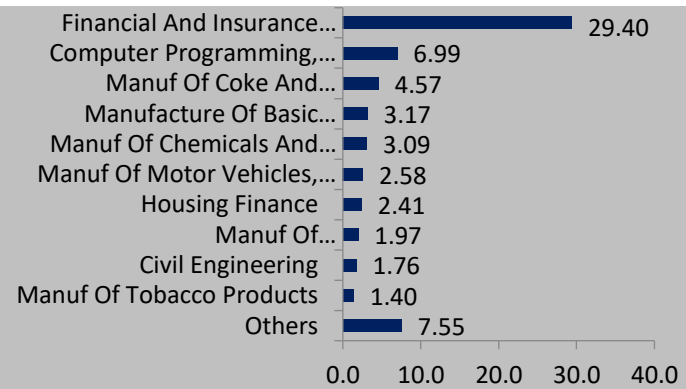
Asset Class	AUM (In Rs. Lakhs)	Exposure (%)
Equity	3261.88	46.08
Govt Securities	1971.90	27.85
Corporate Bond	1330.91	18.80
Money Market/Cash	514.49	7.27
Total	7079.18	100

Asset Allocation(%)

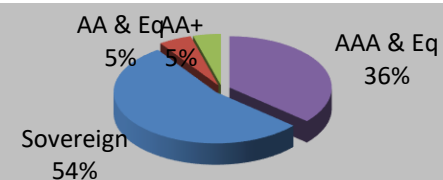
Instrument	Asset Mix (F&U)	Actual
Equity	0 - 60	46.08
Govt Securities	0 - 40	27.85
Corporate Bond	0 - 50	18.80
Money Market/Cash	0 - 40	7.27

Sector Allocation

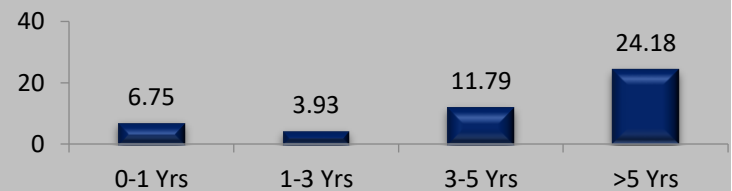
% To Fund



Debt Ratings Profile



Debt Maturity Profile (% To Fund)



Name of Fund Manager- Debt: Vishnu Soni & Ankur Khandelwal Equity: Amit Sureka

Other Funds Managed By fund Manager: Build N Protect Fund Series 1, Safe Money Fund, Safe Money Pension Fund, Save N Grow Money Pension Fund, Steady Money Fund, Steady Money Pension Fund, True Wealth Fund, Stability Plus Money Fund, Group Debt Fund, Group Balance Fund.

Amit Sureka - Build India Fund, Build India Pension Fund, Grow Money Fund, Grow Money Pension Fund, Grow Money Pension Plus, Grow Money Plus, Growth Opportunities Plus, Growth Opportunities, Growth Opportunities Pension, Growth Opportunities Pension Plus, Save and Grow Money Pension, Group Balance Fund.

Save and Grow Money Pension Fund

ULIF00426/12/2007BSNGROWPEN130

Investment Objective: To provide steady accumulation of income in medium to long term by investing in high quality debt papers and government securities and a limited opportunity of capital appreciation. This would be more of a defensively managed fund.

Fund Performance(%)

	1 Month	6 Month	1 Year	2 Year	3 Year	SI
Fund	-1.62	-2.35	3.96	13.53	8.94	8.91

Benchmark -2.52 -2.43 3.11 15.85 8.85 7.40

Benchmark: Nifty 100=45%, Crisil Composite Bond Fund Index=55%,*Inception Date- 03 Jan 2008, <1yr ABS & >=1yr CAGR

NAV

34.2444

Modified Duration

4.24

Security Name	% To Fund
Equities	45.48
RELIANCE INDUSTRIES LTD	4.68
ICICI BANK LTD	4.17
INFOSYS TECHNOLOGIES LTD	3.89
HDFC BANK LTD	3.54
HOUSING DEVELOPMENT FINANCE CORP	2.72
TATA CONSULTANCY SERVICES LTD	1.85
LARSEN & TOUBRO LTD	1.69
STATE BANK OF INDIA LTD	1.62
TATA STEEL LTD	1.27
KOTAK MAHINDRA BANK LTD	1.17
Others	18.88
Government Securities	24.08
6.68% GOI 17/09/2031	11.26
5.74% GOI 15/11/2026	5.34
6.54% GOI 17/01/2032	5.13
5.63% GOI 12/04/2026	1.47
7.26% GOI 14/01/2029	0.88
Corporate Bonds	22.17
8.55% IRFC LTD 21/02/2029	6.51
7.6% AXIS BANK LTD 20/10/2023	6.24
9.55% HINDALCO INDUSTRIES LTD 27/06/2022	6.18
8.24% PGC LTD 14/02/2029	3.23
Money Market/Cash	8.27
Total	100.00

Asset Class (% To Fund)

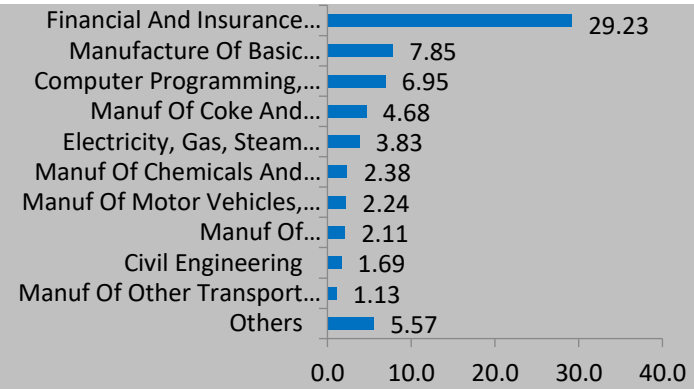
Asset Class	AUM (In Rs. Lakhs)	Exposure (%)
Equity	147.56	45.48
Govt Securities	78.15	24.08
Corporate Bond	71.92	22.17
Money Market/Cash	26.84	8.27
Total	324.46	100

Asset Allocation(%)

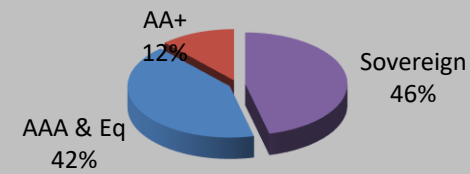
Instrument	Asset Mix (F&U)	Actual
Equity	0 - 60	45.48
Govt Securities	0 - 40	24.08
Corporate Bond	0 - 50	22.17
Money Market/Cash	0 - 40	8.27

Sector Allocation

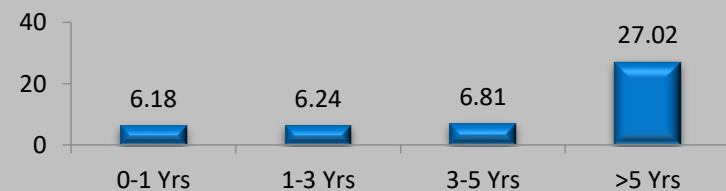
% To Fund



Debt Ratings Profile



Debt Maturity Profile (% To Fund)



Name of Fund Manager- Debt: Vishnu Soni & Ankur Khandelwal Equity: Amit Sureka
Other Funds Managed By fund Manager: Build N Protect Fund Series 1, Safe Money Fund, Safe Money Pension Fund, Save N Grow Money Pension Fund, Steady Money Fund, Steady Money Pension Fund, True Wealth Fund, Stability Plus Money Fund, Group Debt Fund, Group Balance Fund. Amit Sureka - Build India Fund, Build India Pension Fund, Grow Money Fund, Grow Money Pension Fund, Grow Money Pension Plus, Grow Money Plus, Growth Opportunities Plus, Growth Opportunities, Growth Opportunities Pension, Growth Opportunities Pension Plus, Save and Grow, Group Balance Fund.

True Wealth Fund

ULIF02104/10/2010BTRUEWLTHG130

Investment Objective: To provide the highest daily NAV guarantee during the tracking period, subject to a minimum NAV of Rs. 12, at maturity by investing in a mix of fixed income securities, money market instruments and diversified high quality equities in such a manner so as to meet the highest NAV guarantee on maturity. We would also use equity and fixed income derivatives as permitted by IRDA from time to time.

Fund Performance(%)

	1 Month	6 Month	1 Year	2 Year	3 Year	SI
Fund	0.07	0.42	1.11	1.67	2.40	2.83
Benchmark	--	--	--	--	--	--

*Inception Date- 11 Oct 2010, <1yr ABS & >=1yr CAGR

NAV

13.8358

Modified Duration

0.30

Security Name	% To Fund
Government Securities	31.72
8.13% GOI 21/09/2022	31.72
Money Market/Cash	68.28
Total	100.00

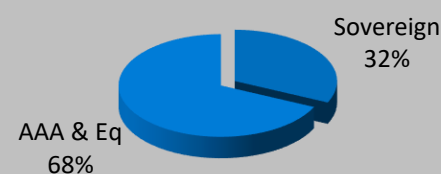
Asset Class (% To Fund)

Asset Class	AUM (In Rs. Lakhs)	Exposure (%)
Equity	--	--
Govt Securities	12.91	31.72
Corporate Bond	--	--
Money Market/Cash	27.80	68.28
Total	40.72	100

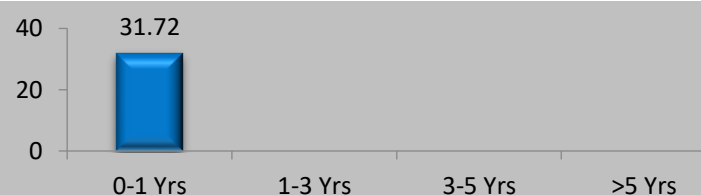
Asset Allocation(%)

Instrument	Asset Mix (F&U)	Actual
Equity	0 - 100	--
Govt Securities	0 - 100	31.72
Corporate Bond	-	--
Money Market/Cash	0 - 100	68.28

Debt Ratings Profile



Debt Maturity Profile (% To Fund)



Name of Fund Manager- Vishnu Soni & Ankur Khandelwal

Other Funds Managed By fund Manager: Build N Protect Fund Series 1, Safe Money Fund, Safe Money Pension Fund, Save N Grow Money Fund, Save N Grow Money Pension Fund, Steady Money Fund, Steady Money Pension Fund, Stability Plus Money Fund, Group Debt Fund, Group Balance Fund.

Steady Money Fund

ULIF00321/08/2006DSTDYMOENY130

Investment Objective: To provide steady accumulation of income in medium to long term by investing in corporate bonds and government securities.

Fund Performance(%)

	1 Month	6 Month	1 Year	2 Year	3 Year	SI
Fund	-0.81	-1.34	0.89	2.60	5.80	7.74
Benchmark	-1.35	-2.04	0.64	3.40	6.51	7.38

Benchmark: CRISIL Composite Bond Fund Index,*Inception Date- 05 Sep 2006, <1yr ABS & >=1yr CAGR

NAV

32.3541

Modified Duration

3.46

Security Name	% To Fund
Government Securities	46.88
5.74% GOI 15/11/2026	11.68
5.63% GOI 12/04/2026	9.35
7.26% GOI 14/01/2029	5.71
6.54% GOI 17/01/2032	4.91
7.17% GOI 08/01/2028	3.65
364 D TB 09/06/2022	3.59
6.45% GOI 07/10/2029	2.85
6.35% GOI 23/12/2024	2.39
7.72% GOI 15/06/2049	1.21
8.91% MAHARASHTRA SDL 05/09/2022	0.60
Others	0.93
Corporate Bonds	41.13
6.83% HOUSING DEVELOPMENT FINANCE CORP 08/01/2031	6.46
8.4% IRFC LTD 08/01/2029	5.65
7.13% LIC HOUSING FINANCE 28/11/2031	4.27
7.6% FOOD CORPORATION OF INDIA 09/01/2030	4.18
5.74% REC LTD 20/06/2024	3.54
7.6% AXIS BANK LTD 20/10/2023	3.27
9.6% EXIM Bank LTD 07/02/2024	3.13
7.71% L&T FINANCE LTD 08/08/2022	2.41
9.6% HDB FINANCIAL SERVICES LTD 22/03/2023	1.96
7.95% HDFC BANK LTD 21/09/2026	1.59
Others	4.67
Money Market/Cash	11.99
Total	100.00

Name of Fund Manager- Vishnu Soni & Ankur Khandelwal

Other Funds Managed By fund Manager: Build N Protect Fund Series 1, Safe Money Pension Fund, Save N Grow Money Fund, Save N Grow Money Pension Fund, Safe Money Fund, Steady Money Pension Fund, True Wealth Fund, Stability Plus Money Fund, Group Debt Fund, Group Balance Fund.

Asset Class (% To Fund)

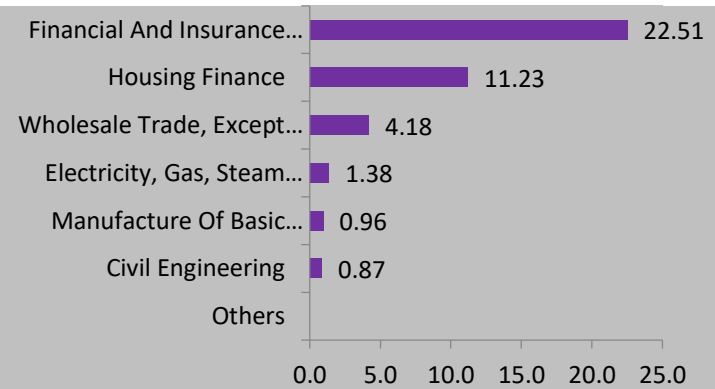
Asset Class	AUM (In Rs. Lakhs)	Exposure (%)
Equity	--	--
Govt Securities	3913.63	46.88
Corporate Bond	3434.12	41.13
Money Market/Cash	1000.78	11.99
Total	8348.53	100

Asset Allocation(%)

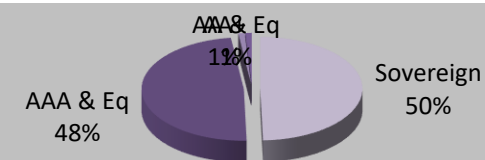
Instrument	Asset Mix (F&U)	Actual
Equity	-	--
Govt Securities	40 - 60	46.88
Corporate Bond	20 - 80	41.13
Money Market/Cash	0 - 40	11.99

Sector Allocation

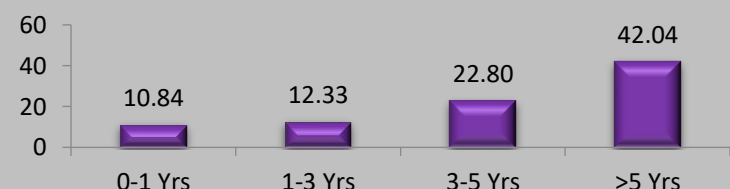
% To Fund



Debt Ratings Profile



Debt Maturity Profile (% To Fund)



Build n Protect Series 1 Fund

ULIF00919/05/2009BBUILDNPS1130

Investment Objective: To protect investments at maturity through steady accumulation of income by investing in government securities while seeking to provide a limited opportunity for capital appreciation by investing in equities.

Fund Performance(%)

	1 Month	6 Month	1 Year	2 Year	3 Year	SI
Fund	-1.35	-1.42	0.22	2.29	5.64	6.12
Benchmark	-1.78	-5.19	-5.43	-3.35	0.88	3.10

Benchmark: 7 Years G-Sec*,*Inception Date- 19 May 2009, <1yr ABS & >=1yr CAGR

NAV

21.6908

Modified Duration

2.00

Debt portfolio

% To Fund

Government Securities	92.87
6.35% GOI 23/12/2024	50.34
8.2% GOI 15/09/2024	42.53
Money Market/Cash	7.13
Total	100.00

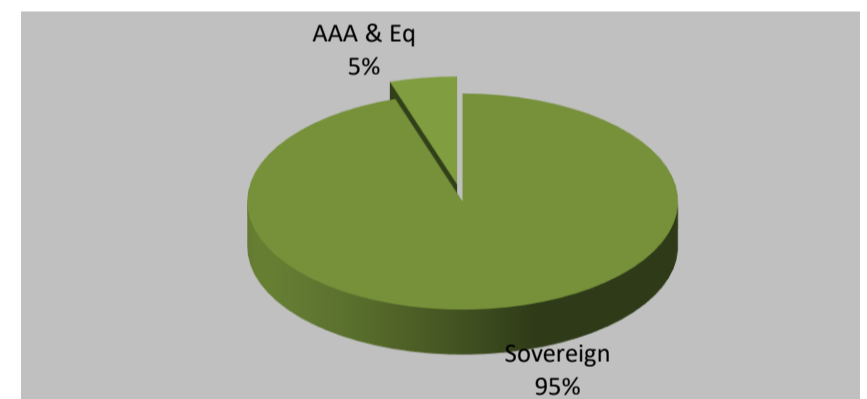
Asset Class Wise Exposure

Asset Class	AUM (In Rs. Lakhs)	Exposure (%)
Equity	--	--
Govt Securities	183.20	92.87
Corporate Bond	--	--
Money Market/Cash	14.06	7.13
Total	197.26	100

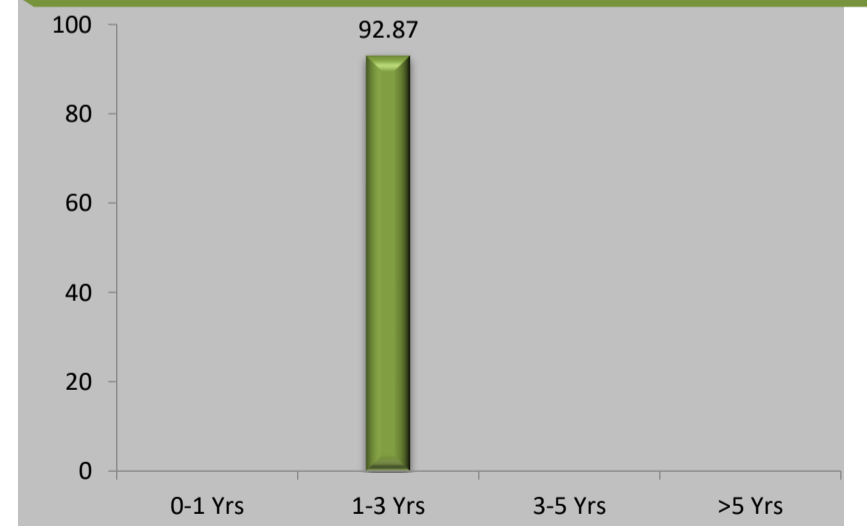
Asset Allocation(%)

Instrument	Asset Mix (F&U)	Actual
Equity	0 - 40	--
Govt Securities	60 - 100	92.87
Corporate Bond	-	--
Money Market/Cash	0 - 20	7.13

Debt Ratings Profile



Debt Maturity Profile (% To Fund)



Name of Fund Manager- Vishnu Soni & Ankur Khandelwal

Other Funds Managed By fund Manager: Safe Money Fund, Safe Money Pension Fund, Save N Grow Money Fund, Save N Grow Money Pension Fund, Steady Money Fund, Steady Money Pension Fund, True Wealth Fund, Stability Plus Money Fund, Group Debt Fund, Group Balance Fund.

Safe Money Fund

ULIF01007/07/2009LSAFEMONEY130

Investment Objective: To provide capital protection through investment in low-risk money-market & short-term debt instruments with maturity of 1 year or lesser.

Fund Performance(%)

	1 Month	6 Month	1 Year	2 Year	3 Year	SI
Fund	0.26	1.31	2.50	2.42	3.22	5.88
Benchmark	0.32	1.91	3.73	3.77	4.50	6.81

Benchmark: CRISIL Liquid Fund Index,*Inception Date- 08 Jul 2009, <1yr ABS & >=1yr CAGR

NAV

20.8917

Modified Duration

0.23

Security Name	% To Fund
Government Securities	55.12
182 D TB 21/07/2022	14.21
364 D TB 09/06/2022	10.81
364 D TB 13/10/2022	8.77
364 D TB 27/04/2023	7.98
364 D TB 16/06/2022	7.66
182 D TB 10/11/2022	5.69
Corporate Bonds	13.62
BAJAJ FINANCE Ltd. CP 28/04/2023	7.94
9.55% HINDALCO INDUSTRIES LTD 27/06/2022	4.84
7.28% HOUSING DEVELOPMENT FINANCE CORP 26/09/2022	0.84
Money Market/Cash	31.26
Total	100.00

Asset Class (% To Fund)

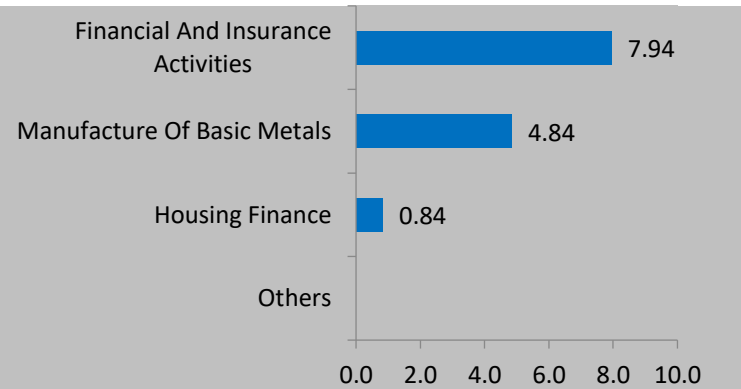
Asset Class	AUM (In Rs. Lakhs)	Exposure (%)
Equity	--	--
Govt Securities	3311.40	55.12
Corporate Bond	818.42	13.62
Money Market/Cash	1877.49	31.26
Total	6007.31	100

Asset Allocation(%)

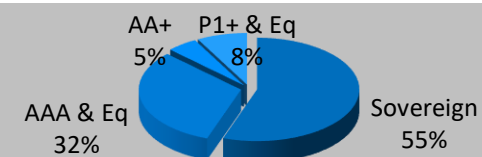
Instrument	Asset Mix (F&U)	Actual
Equity	-	--
Govt Securities	40 - 60	55.12
Corporate Bond	0 - 60	13.62
Money Market/Cash	0 - 40	31.26

Sector Allocation

% To Fund



Debt Ratings Profile



Debt Maturity Profile (% To Fund)



Name of Fund Manager- Vishnu Soni & Ankur Khandelwal

Other Funds Managed By fund Manager: Build N Protect Fund Series 1, Safe Money Pension Fund, Save N Grow Money Fund, Save N Grow Money Pension Fund, Steady Money Fund, Steady Money Pension Fund, True Wealth Fund,Stability Plus Money Fund,Group Debt Fund,Group Balance Fund.

Safe Money Pension Fund

ULIF01107/12/2009LSAFEMONYP130

Investment Objective: To provide capital protection through investment in low-risk money-market & short-term debt instruments with maturity of 1 year or lesser.

Fund Performance(%)

	1 Month	6 Month	1 Year	2 Year	3 Year	SI
Fund	0.25	1.30	2.48	2.42	3.11	5.83
Benchmark	0.32	1.91	3.73	3.77	4.50	6.81

Benchmark: CRISIL Liquid Fund Index,*Inception Date- 08 Jul 2009, <1yr ABS & >=1yr CAGR

NAV

20.7698

Modified Duration

0.18

Security Name	% To Fund
Government Securities	55.76
364 D TB 09/06/2022	26.36
364 D TB 13/10/2022	11.45
364 D TB 27/04/2023	6.74
364 D TB 16/06/2022	6.32
182 D TB 21/07/2022	4.89
Corporate Bonds	13.77
9.55% HINDALCO INDUSTRIES LTD 27/06/2022	7.06
BAJAJ FINANCE Ltd. CP 28/04/2023	6.71
Money Market/Cash	30.47
Total	100.00

Asset Class (% To Fund)

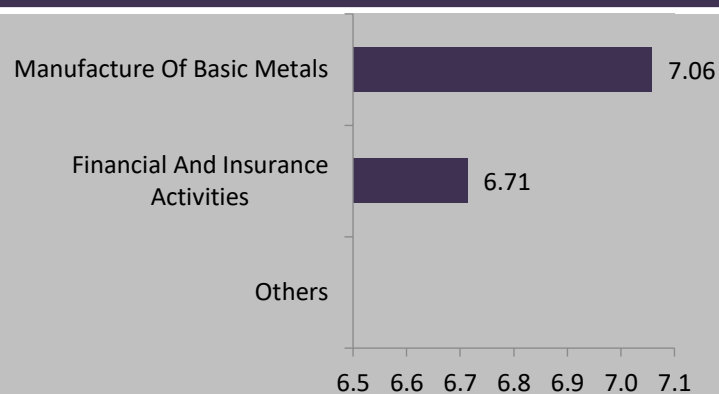
Asset Class	AUM (In Rs. Lakhs)	Exposure (%)
Equity	--	--
Govt Securities	79.27	55.76
Corporate Bond	19.58	13.77
Money Market/Cash	43.31	30.47
Total	142.16	100

Asset Allocation(%)

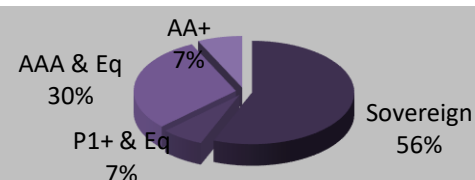
Instrument	Asset Mix (F&U)	Actual
Equity	-	--
Govt Securities	40 - 60	55.76
Corporate Bond	0 - 60	13.77
Money Market/Cash	0 - 40	30.47

Sector Allocation

% To Fund



Debt Ratings Profile



Debt Maturity Profile (% To Fund)



Name of Fund Manager- Vishnu Soni & Ankur Khandelwal

Other Funds Managed By fund Manager: Build N Protect Fund Series 1, Safe Money Fund, Save N Grow Money Fund, Save N Grow Money Pension Fund, Steady Money Fund, Steady Money Pension Fund, True Wealth Fund, Stability Plus Money Fund, Group Debt Fund, Group Balance Fund.

Steady Money Pension Fund

ULIF00626/12/2007DSTDYMONYP130

Investment Objective: To provide steady accumulation of income in medium to long term by investing in corporate bonds and government securities.

Fund Performance(%)

	1 Month	6 Month	1 Year	2 Year	3 Year	SI
Fund	-1.06	-1.74	0.47	3.13	5.88	7.55
Benchmark	-1.35	-2.04	0.64	3.40	6.51	7.46

Benchmark: CRISIL Composite Bond Fund Index,*Inception Date- 03 Jan 2008, <1yr ABS & >=1yr CAGR

NAV

28.5642

Modified Duration

3.33

Security Name	% To Fund
Government Securities	52.58
5.74% GOI 15/11/2026	32.19
6.54% GOI 17/01/2032	6.59
5.63% GOI 12/04/2026	6.06
7.26% GOI 14/01/2029	3.48
7.27% GOI 08/04/2026	2.14
364 D TB 09/06/2022	2.12
Corporate Bonds	39.26
8.24% PGC LTD 14/02/2029	8.89
9.6% EXIM Bank LTD 07/02/2024	8.88
8.27% NHAI LTD 28/03/2029	8.78
5.74% REC LTD 20/06/2024	8.36
9.6% HDB FINANCIAL SERVICES LTD 22/03/2023	4.35
Money Market/Cash	8.16
Total	100.00

Asset Class (% To Fund)

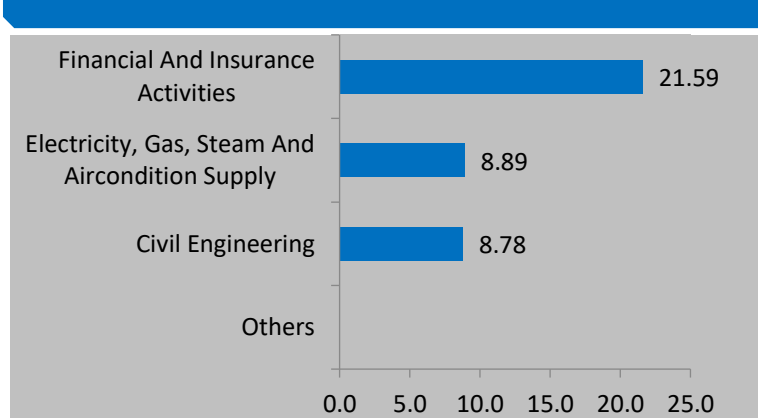
Asset Class	AUM (In Rs. Lakhs)	Exposure (%)
Equity	--	--
Govt Securities	123.81	52.58
Corporate Bond	92.45	39.26
Money Market/Cash	19.20	8.16
Total	235.46	100

Asset Allocation(%)

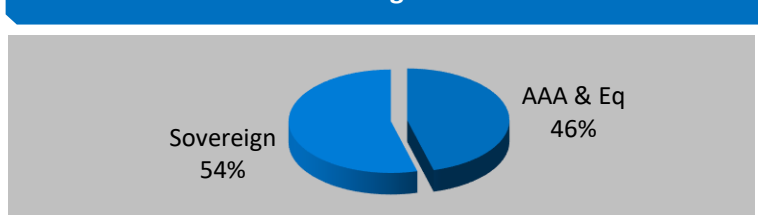
Instrument	Asset Mix (F&U)	Actual
Equity	-	--
Govt Securities	40 - 60	52.58
Corporate Bond	20 - 80	39.26
Money Market/Cash	0 - 40	8.16

Sector Allocation

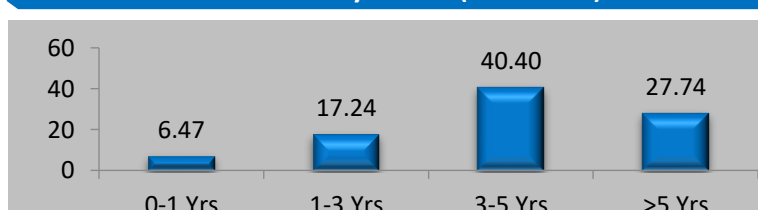
% To Fund



Debt Ratings Profile



Debt Maturity Profile (% To Fund)



Name of Fund Manager- Vishnu Soni & Ankur Khandelwal

Other Funds Managed By fund Manager: Build N Protect Fund Series 1, Safe Money Fund, Safe Money Pension Fund, Save N Grow Money Fund, Save N Grow Money Pension Fund, Steady Money Fund, True Wealth Fund, Stability Plus Money Fund, Group Debt Fund, Group Balance Fund.

Stability Plus Money Fund

ULIF02322/02/17STAPLUMONF130

Investment Objective: To provide long term absolute total return through investing across a diversified high quality debt portfolio.

Fund Performance(%)

	1 Month	6 Month	1 Year	2 Year	3 Year	SI
Fund	-0.79	-1.23	0.99	2.78	5.61	6.18
Benchmark	0.58	3.50	7.00	7.00	7.00	7.00

Benchmark: 7% of NET FMC, *Inception Date- 28 Dec 2017, <1yr ABS & >=1yr CAGR

NAV

13.0402

Modified Duration

4.34

Security Name

% To Fund

Security Name	% To Fund
Debt	87.80
5.74% GOI 15/11/2026	9.07
5.63% GOI 12/04/2026	6.88
7.17% GOI 08/01/2028	4.90
6.54% GOI 17/01/2032	4.06
8.91% MAHARASHTRA SDL 05/09/2022	3.69
364 D TB 09/06/2022	3.08
7.26% GOI 14/01/2029	2.17
6.97% GOI 06/09/2026	0.94
7.09% GUJARAT SDL 23/02/2032	0.55
364 D TB 13/10/2022	0.42
6.8% STATE BANK OF INDIA LTD 21/08/2035	5.89
8.24% PGC LTD 14/02/2029	5.79
9.3% INDIA INFRADEBT LTD 05/01/2024	5.52
8.24% NABARD 22/03/2029	4.45
7.25% HOUSING DEVELOPMENT FINANCE CORP 17/06/2030	4.16
5.74% REC LTD 20/06/2024	3.76
6.83% HOUSING DEVELOPMENT FINANCE CORP 08/01/2031	3.02
9.6% EXIM Bank LTD 07/02/2024	2.45
8.7% LIC HOUSING FINANCE 23/03/2029	2.25
8.05% HOUSING DEVELOPMENT FINANCE CORP 22/10/2029	2.17
Others	12.58
Money Market/Cash	12.20
Total	100.00

Name of Fund Manager- Vishnu Soni & Ankur Khandelwal

Other Funds Managed By fund Manager: Build N Protect Fund Series 1, Safe Money Fund, Safe Money Pension Fund, Save N Grow Money Fund, Save N Grow Money Pension Fund, Steady Money Fund, Steady Money Pension Fund, True Wealth Fund, Group Debt Fund, Group Balance Fund.

Asset Class (% To Fund)

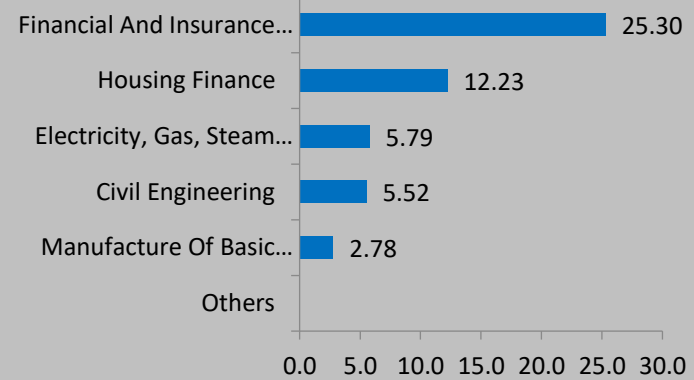
Asset Class	AUM (In Rs. Lakhs)	Exposure (%)
Equity	--	--
Debt	4130.62	87.80
Money Market/Cash	574.08	12.20
Total	4704.70	100

Asset Allocation(%)

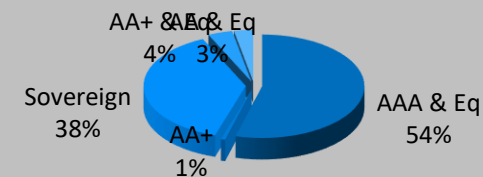
Instrument	Asset Mix (F&U)	Actual
Equity	0 - 25	--
Debt	55 - 100	87.80
Money Market/Cash	0 - 20	12.20

Sector Allocation

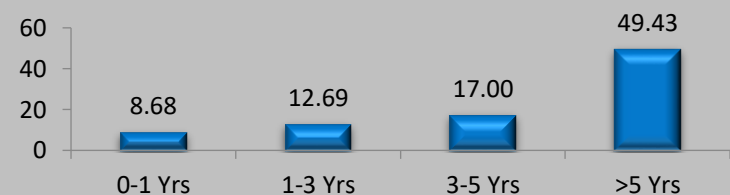
% To Fund



Debt Ratings Profile



Debt Maturity Profile (% To Fund)



Group Debt Fund

ULGF00303/08/17GROUPDEBTF130

Investment Objective: To produce better risk adjusted return than the benchmark with priority being given to total return.

Fund Performance(%)

	1 Month	6 Month	1 Year	2 Year	3 Year	SI
Fund	-0.85	-1.36	0.90	2.91	6.28	6.28
Benchmark	-1.35	-2.04	0.64	3.40	6.51	6.13

Benchmark: CRISIL Composite Bond Fund Index,*Inception Date- 03 Aug 2017, <1yr ABS & >=1yr CAGR

NAV

13.4176

Modified Duration

3.44

Security Name	% To Fund
Debt	89.17
5.74% GOI 15/11/2026	18.25
6.35% GOI 23/12/2024	6.69
5.63% GOI 12/04/2026	6.21
7.17% GOI 08/01/2028	5.46
7.26% GOI 14/01/2029	3.76
6.54% GOI 17/01/2032	3.11
7.27% GOI 08/04/2026	2.79
7.32% GOI 28/01/2024	2.07
182 D TB 21/07/2022	2.02
364 D TB 27/04/2023	1.95
7.5% IRFC LTD 09/09/2029	7.29
7.6% FOOD CORPORATION OF INDIA 09/01/2030	6.10
7.13% LIC HOUSING FINANCE 28/11/2031	4.31
7.6% AXIS BANK LTD 20/10/2023	4.12
6.83% HOUSING DEVELOPMENT FINANCE CORP 08/01/2031	3.86
9.55% HINDALCO INDUSTRIES LTD 27/06/2022	2.86
8.37% REC LTD 07/12/2028	2.58
8.24% PGC LTD 14/02/2029	2.13
Others	3.60
Money Market/Cash	10.83
Total	100.00

Name of Fund Manager- Vishnu Soni & Ankur Khandelwal

Other Funds Managed By fund Manager: Build N Protect Fund Series 1, Safe Money Fund, Safe Money Pension Fund, Save N Grow Money Fund, Save N Grow Money Pension Fund, Steady Money Fund, Steady Money Pension Fund, True Wealth Fund, Stability Plus Money Fund, Group Balance Fund.

Asset Class (% To Fund)

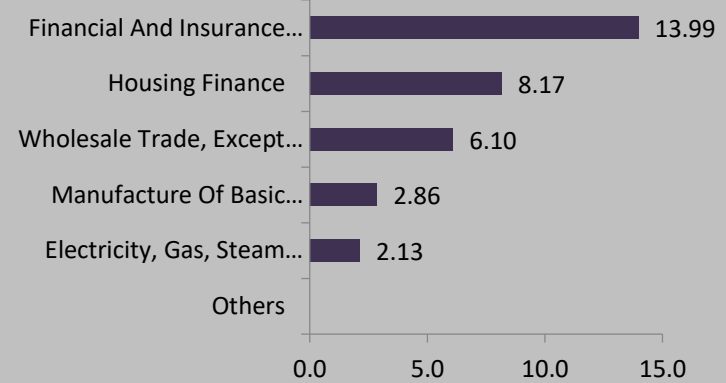
Asset Class	AUM (In Rs. Lakhs)	Exposure (%)
Equity	--	--
Debt	2188.37	89.17
Money Market/Cash	265.78	10.83
Total	2454.16	100

Asset Allocation(%)

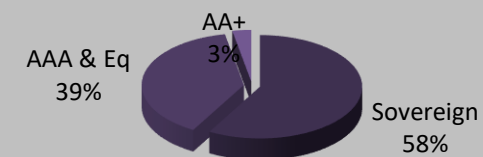
Instrument	Asset Mix (F&U)	Actual
Equity	-	--
Debt	60 - 100	89.17
Money Market/Cash	0 - 40	10.83

Sector Allocation

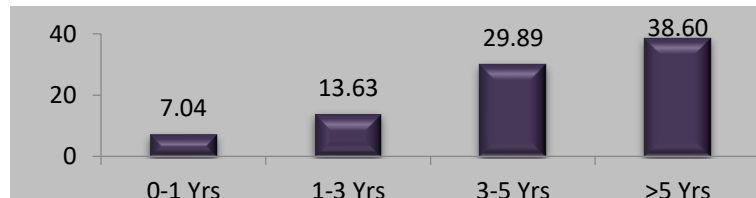
% To Fund



Debt Ratings Profile



Debt Maturity Profile (% To Fund)



Group Balance Fund

ULGF00203/08/17GROUPBALDF130

Investment Objective: To produce better risk adjusted return than the benchmark with priority being given to total return.

Fund Performance(%)

	1 Month	6 Month	1 Year	2 Year	3 Year	SI
Fund	0.28	1.30	2.53	2.45	--	3.02
Benchmark	-2.52	-2.43	3.11	15.85	8.85	10.32

Benchmark: Nifty 100=45%, Crisil Composite Bond Fund Index=55%,*Inception Date- 27 Feb 2019,
<1yr ABS & >=1yr CAGR

NAV	Modified Duration
11.0192	--

Security Name	% To Fund
Money Market/Cash	100.00
Total	100.00

Asset Class (% To Fund)

Asset Class	AUM (In Rs. Lakhs)	Exposure (%)
Equity	--	--
Debt	--	--
Money Market/Cash	1.21	100.00
Total	1.21	100

Asset Allocation(%)

Instrument	Asset Mix (F&U)	Actual
Equity	25 - 60	--
Debt	30 - 75	--
Money Market/Cash	0 - 40	100.00

Name of Fund Manager- Debt: Vishnu Soni & Ankur Khandelwal Equity: Amit Sureka

Other Funds Managed By fund Manager: Build N Protect Fund Series

1, Safe Money Fund, Safe Money Pension Fund, Save N Grow Money Pension Fund, Steady Money Fund, Steady Money Pension Fund, True Wealth Fund, Stability Plus Money Fund, Group Debt Fund, Group Balance Fund.

Amit Sureka - Build India Fund, Build India Pension Fund, Grow Money Fund, Grow Money Pension Fund, Grow Money Pension Plus, Grow Money Plus, Growth Opportunities Plus, Growth Opportunities, Growth Opportunities Pension Plus, Growth Opportunities Pension, Save and Grow Money Pension, Save and Grow.

Disclaimers: 1.This Investment Newsletter is for information purpose only for existing customers and should not be construed as financial advice, offer, recommendation or solicitation to enter into any transaction. While all reasonable care has been ensured in preparing this newsletter, Bharti AXA Life Insurance Company limited or any other person connected with it, accepts no responsibility or liability for errors of facts or accuracy or opinions expressed and Policyholder should use his/her own discretion and judgment while investing in financial markets. 2. The information contained herein is as on 31st May,2022. 3. Past performance of the funds, as shown above, is not indicative of future performance or returns. 4. Grow Money Fund, Save n Grow Money Fund, Steady Money Fund, Growth Opportunities Fund, Grow Money Pension Fund, Save n Grow Money Pension Fund, Steady Money Pension Fund, Growth Opportunities Pension Fund, Build n Protect Fund Series 1, Safe Money Fund, Safe Money Pension Fund, Grow Money Plus, Grow Money Pension Plus, Growth Opportunities Plus, Growth Opportunities Pension Plus Fund, Build India Pension, Build India Fund, True Wealth Fund, Stability Plus Money Fund, Group Debt Fund Group and Balance Fund are only the names of the funds and do not indicate its expected future returns or performance. 5. ABS=Absolute Return, CAGR=Compounded Annual Growth Rate 6. Sector allocations as shown in the newsletter are only for presentation purpose and do not necessarily indicate industry exposure.

Bharti AXA Life Insurance Company Limited. (IRDA Regn.No. 130),Regd. Address: Unit No. 1904, 19th Floor,

Parinee Crescenzo, 'G' Block, Bandra Kurla Complex, Near MCA Club, Bandra East, Mumbai- 400 051.

Toll free: 1800 102 4444

SMS SERVICE to 56677 (We will be in touch within 24 hours to address your query),

Email: service@bharti-axalife.com, www.bharti-axalife.com

Compliance No.: Comp- Jun-2022-5094

CIN - U66010MH2005PLC157108

